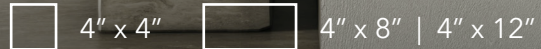


Stone Cork

Concrete Tile



4 Colors | 3 Sizes | 3 Thicknesses



Featured: Stone Cork SC11

Details	Test	Method	Results	Packing	Pcs/Box	SF/Box	Lbs/Box
Available Sizes: 4" x 4" 4" x 8" 4" x 12" All sizes are packaged together as a set. Thickness: 4" x 4" - 9/16" 13/16" 1" 4" x 8" - 9/16" 13/16" 1" 4" x 12" - 9/16" 13/16" 1"	Water Absorption Flexural Strength Freeze/Thaw Resist Thermal Shock Resist	14617-1 14617-2 14617-5 14617-6	≤ 10% 6 MPa Pass Pass	Random mix (9 of each size per box)	27pc	5.81 SF	35.72 Lbs

Color Options

Symbols



SC11



SC33



SC34



SC35



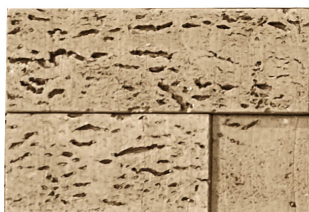
Residential



Wall Tile



Commercial



SC33 - 3 pc thickness variation

	Thickness Random Mix / Package		
4" x 4"	9/16"	13/16"	1"
4" x 8"	9/16"	13/16"	1"
4" x 12"	9/16"	13/16"	1"